

4 Incubation Channels,
1 Emergency Test Channel!



Getein 1160

Immunofluorescence Quantitative Analyzer

Getein 1160 Immunofluorescence Quantitative Analyzer is a rapid, compact, user-friendly, multi-item analyzer that provides point-of-care testing and saves diagnosis time for patients. With **4 test channels** and **32 °C constant incubation environment**, Getein 1160 could offer timely, accurate and efficient testing for a wide range of scenarios.

Benefits

The diagram shows the Getein 1160 analyzer from a top-down perspective. The device is white with a black top panel. A blue touchscreen interface is visible on the top panel, displaying various icons and text. The dimensions are indicated with blue lines and text: 152 mm height, 276 mm depth, and 299 mm width. A blue circular icon with a thermometer symbol is connected to the 'Constant Temperature' feature. A blue circular icon with a multi-channel symbol is connected to the 'Multiple Channels' feature. A blue circular icon with a printer symbol is connected to the 'Auto Cartridge Collection' feature. The bottom view of the device shows a black front panel with a printer slot and various ports.

Constant Temperature
32°C constant test environment, allowing for more accurate test results

Multiple Channels
4 incubation channels
+
1 emergency test channel

Auto Cartridge Collection
Automatically receive the used test cards when the test is finished

- **Portable**

Dimensions :299 mm (W) × 276 mm (D) × 152 mm (H)
Weight :4 kg

- **Detection Performance Improved**

Reduced influence by temperature and improved detection accuracy

- **Convenient**

Easy to operate, user friendly interface

- **Instant Results**

Get results in 3-15 minutes

- **Reliable Accuracy**

Good correlation with CLIA method

Technical Specifications



Large Display

- 10.1" LCD touch screen
- Intuitive user interface



RFID Card Calibration

Automatic reading of batch number and calibration information



Sampling

- Sample Type: serum, plasma, whole blood, capillary blood, urine, swab, saliva, stool
- Sample Volume: 10 ~ 200 μ L depending on the assay



Working Environment

- Temperature: 10°C ~ 35°C
- Relative humidity: \leq 70%
- Air pressure: 70.0 kPa ~ 106.0 kPa



Repeatability

- CV \leq 2% within range [100, 15000] mV
- CV \leq 10% within range [0, 100] mV



Built-in Thermal Printer

- Real-time auto-printing
- Support for external printer



Connectivity

- Ethernet port for LIS/HIS
- COM port for PC
- 2 USB ports for software update and file copy



Language

English/Spanish/Chinese



Cases Storage

Over 100,000 test cases



Test Channel

- 4 incubation channels + 1 emergency test channel
- Multiple test items can be tested at the same time, saving operation time



Android System

- Smooth operation
- Easy operating software updates



Application



Laboratory



Clinic



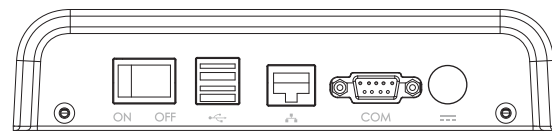
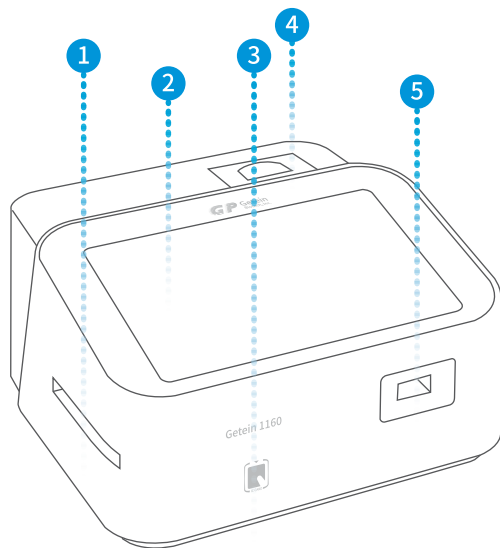
Emergency



Ambulance

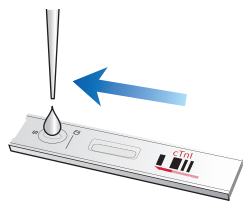


ICU



- 1 Card Exit
- 2 10.1-inch Touch Screen
- 3 RFID Card Recognition Zone
- 4 Built-in thermal Printer
- 5 Card Inlet

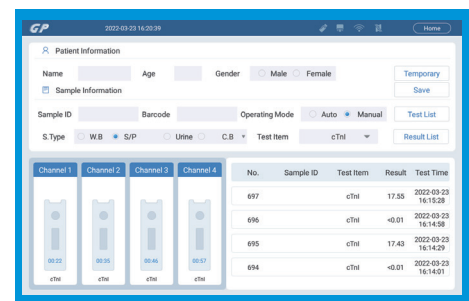
Operation Procedure



1 Sample dispense



2 Insert test cards, four allowed at the same time



3 Waiting in incubation



4 Result show and print

TEST ITEMS

Cat. #	TEST ITEMS	DISEASES	CUT-OFF VALUE	SAMPLE TYPES	MEASURING RANGE	SAMPLE VOLUME	REACTION TIME	QUALIFICATION
Cardiac Markers								
IF5001	cTnI	Myocardial infarction	0.10 ng/mL	S/P/WB	0.10-50.00 ng/mL	100 µL	10 min	NMPA CE
New IF5019	hs-cTnI	Myocardial infarction	0.040 ng/mL	S/P/WB	0.01-50.00 ng/mL	100 µL	10 min	NMPA CE
New IF5098	TnT	Myocardial infarction	14.0 pg/mL	S/P/WB	10.0-10000.0 pg/mL	100 µL	15 min	CE
IF5089	BNP	Heart failure	100.0 pg/mL	P/WB	5.0-5000.0 pg/mL	100 µL	10 min	CE
IF5002	NT-proBNP	Heart failure	300 pg/mL	S/P/WB	100-35000 pg/mL	100 µL	10 min	NMPA CE
IF5005	CK-MB/cTnI/Myo	Myocardial damage /infarction	CK-MB: 5.00 ng/mL cTnI: 0.10 ng/mL Myo: 70.0 ng/mL	S/P/WB	2.50-80.00 ng/mL 0.10-50.00 ng/mL 30.0-600.0 ng/mL	100 µL	10 min	NMPA CE
IF5012	CK-MB/cTnI	Myocardial damage /infarction	CK-MB: 5.00 ng/mL cTnI: 0.10 ng/mL	S/P/WB	2.50-80.00 ng/mL 0.10-50.00 ng/mL	100 µL	10 min	CE
IF5014	H-FABP	Myocardial damage	6.36 ng/mL	S/P/WB	1.00-120.00 ng/mL	100 µL	3 min	CE
IF5016	CK-MB/cTnI/H-FABP	Myocardial damage /infarction	CK-MB: 5.00 ng/mL cTnI: 0.10 ng/mL H-FABP: 6.36 ng/mL	S/P/WB	2.50-80.00 ng/mL 0.10-50.00 ng/mL 2.00-100.00 ng/mL	100 µL	10 min	CE
IF5018	CK-MB	Myocardial injury	5.00 ng/mL	S/P/WB	2.50-80.00 ng/mL	100 µL	10 min	CE
Coagulation Markers								
IF5006	D-Dimer	Venous thromboembolism	0.50 mg/L	P/WB	0.10-10.00 mg/L	100 µL	10 min	NMPA CE
Inflammation								
IF5003	hs-CRP+CRP	Cardiovascular inflammation /normal inflammation	3.0 mg/L 10.0 mg/L	S/P/WB/ Fingertip blood	0.5-200.0 mg/L	10 µL	3 min	CE
IF5007	PCT	Sepsis, bacterial infection	0.10 ng/mL	S/P/WB	0.05-50.00 ng/mL	100 µL	15 min	NMPA CE
IF5044	SAA	Bacterial/Virus infection	10.0 mg/L	S/P/WB/ Fingertip blood	5.0-200.0 mg/L	10 µL	5 min	NMPA CE
IF5090	SAA/CRP	Neonatal sepsis, Bacterial/virus infection	SAA: 10.0 mg/L CRP: 10.0 mg/L	S/P/WB/ Peripheral blood	5.0-200.0 mg/L 0.5-200.0 mg/L	10 µL	5 min	NMPA CE
IF5088	IL-6	Acute inflammation	7.0 pg/mL	S/P/WB/ Peripheral blood	1.5-4000.0 pg/mL	100 µL	15 min	CE
Renal Function								
IF5008	CysC	Acute and chronic renal diseases	0.51-1.09 mg/L	S/P/WB	0.50-10.00 mg/L	10 µL	3 min	NMPA CE
IF5009	mAlb	Diabetic nephropathy, hypertensive nephropathy	20.0 mg/L	Urine	10.0-200.0 mg/L	100 µL	3 min	CE
IF5010	NGAL	Acute kidney injury	Serum: 200.0 ng/mL Urine: 100.0 ng/mL	S/Urine	50.0-5000.0 ng/mL	10 µL	10 min	NMPA CE
IF5011	β ₂ -MG	Acute and chronic kidney diseases/tumours	0.80-3.00 mg/L	S/P/WB	0.50-20.00 mg/L	10 µL	3 min	NMPA CE
Diabetes Mellitus								
IF5017	HbA1c	Diabetes mellitus	3.80%-5.80%	WB	2.00%-14.00%	10 µL	5 min	NGSP NMPA IFCC CE
Metabolic Marker								
IF5031	25-OH-VD	Osteomalacia, osteoporosis	30.00-50.00 ng/mL	S/P	8.00-70.00 ng/mL	30 µL	30 min	CE
Thyroid Function								
IF5024	TSH	Thyroid malfunction	0.27-4.20 µIU/mL	S/P	0.10-50.00 µIU/mL	100 µL	15 min	NMPA CE
IF5022	T3	Hyperthyroidism, hypothyroidism	1.30-3.10 nmol/L	S/P	0.30-10.00 nmol/L	40 µL	15 min	CE
IF5023	T4	Hyperthyroidism, hypothyroidism	59.00-154.00 nmol/L	S/P	5.40-320.00 nmol/L	100 µL	15 min	CE
IF5067	ft3	Hyperthyroidism, hypothyroidism	3.10-6.80 pmol/L	S/P/WB	0.40-50.00 pmol/L	40 µL	15 min	CE
IF5068	ft4	Hyperthyroidism, hypothyroidism	12.00-22.00 pmol/L	S/P/WB	0.30-100.00 pmol/L	100 µL	15 min	CE

Cat. #	TEST ITEMS	DISEASES	CUT-OFF VALUE	SAMPLE TYPES	MEASURING RANGE	SAMPLE VOLUME	REACTION TIME	QUALIFICATION
Reproduction/Fertility								
IF5013	HCG+β	Fertility	5.1 mIU/mL	S/P	5.0-100000.0 mIU/mL	100 μL	10 min	CE
IF5055	LH	PCOS, infertility evaluation	Refer to User Manual	S/P	0.20-150.00 mIU/mL	100 μL	15 min	CE
IF5056	FSH	PCOS, infertility evaluation and pituitary disorders	Refer to User Manual	S/P	0.20-150.00 mIU/mL	100 μL	15 min	CE
IF5066	AMH	Fertility, PCOS, gonadal function, precocious/late puberty	Refer to User Manual	S/P	0.10-20.00 ng/mL	200 μL	15 min	CE
IF5048	PRL	Infertility, gonadal disorders	Refer to User Manual	S/P	0.50-200.00 ng/mL	100 μL	15 min	NMPA CE
IF5071	Prog	Infertility, evaluation of ovulation	Refer to User Manual	S/P	0.10-40.00 ng/mL	100 μL	15 min	CE
NEW IF5073	Testosterone	Female polycystic ovary syndrome, male testosterone insufficiency	Male: 1.75-7.81 ng/mL Female: 0.10-0.75 ng/mL	S/P	0.10-16.00 ng/mL	100 μL	15 min	CE
NEW IF5074	E2	Ovarian function	Refer to user Manual	S/P	40.0-4800.0 pg/mL	100 μL	15 min	CE
Tumor Markers								
IF5053	tPSA	Prostate cancer	4.00 ng/mL	S/P	0.50-100.00 ng/mL	100 μL	15 min	
IF5072	fPSA	Prostate cancer	1.00 ng/mL	S/P	0.05-30.00 ng/mL	100 μL	10 min	
IF5050	AFP	Liver cancer, cancer of ovaries or testicles, etc.	7.0 ng/mL	S/P	2.0-500.0 ng/mL	100 μL	15 min	CE
IF5051	CEA	Cancer marker: colon cancer etc.	4.7 ng/mL	S/P	2.0-500.0 ng/mL	100 μL	15 min	CE
Infectious Disease								
IF5057	Anti-HCV	Hepatitis C	1.00 S/CO	S/P	1.00-20.00 S/CO	100 μL	15 min	
IF5058	Anti-TP	Syphilis	1.00 S/CO	S/P	1.00-50.00 S/CO	100 μL	15 min	CE
IF5059	Anti-HIV	AIDS	1.00 S/CO	S/P	1.00-1000.00 S/CO	100 μL	15 min	
IF5064	HBsAg	Hepatitis B	1.00 IU/mL	S/P	1.00-100.00 IU/mL	100 μL	15 min	
NEW IF5063	Anti-HBs	Hepatitis B	10.00 mIU/mL	S/P/WB	10.00-1000.00 mIU/mL	100 μL	15 min	
IF5084	2019-nCoV IgM/IgG	COVID-19	1.00 COI	S/P/WB		100 μL	10 min	CE
NEW IF5091	SARS-CoV-2 Antigen	COVID-19	1.00 COI	Nasal swab/Saliva		100 μL	15 min	CE
NEW IF5095	SARS-CoV-2 Neutralizing Antibody	COVID-19	Refer to User Manual	S/P/WB/ Fingertip blood		40 μL	15 min	CE
IF5047	<i>H. pylori</i>	<i>H. pylori</i> infection	5.0 ng/mL	Stool	1.0-200.0 ng/mL	3 drops (about 100 μL)	10 min	CE
NEW IF5086	Influenza A/B	Respiratory viral infection	1.00 COI	Nasal swab		100 μL	15 min	CE
NEW IF5136	Dengue NS1 Ag	Dengue virus infection	1.00 S/CO	S/P/WB	0.50-50.00 S/CO	100 μL	15 min	CE
Specific Protein and Rheumatism								
NEW IF5075	RF	Rheumatoid arthritis	15.9 IU/mL	S/P/WB	10.0-640.0 IU/mL	10 μL	10 min	CE
NEW IF5076	ASO	Rheumatic fever, acute glomerulonephritis, group A streptococcal infection	408.0 IU/mL	S/P/WB	60.0-1370.0 IU/mL	10 μL	10 min	CE
NEW IF5029	Anti-CCP	Rheumatoid arthritis	25.0 U/mL	S/P/WB	10.0-400.0 U/mL	10 μL	15 min	CE
Others								
NEW IF5077	Ferritin	Anemia/tumors	Male: 30.00-400.00 ng/mL Female: 13.00-150.00 ng/mL	S/P	0.50-1000.00 ng/mL	10 μL	15 min	CE
NEW IF5069	Total IgE	Allergic disorders	Refer to User Manual	S/P/WB	1.00-2000.00 IU/mL	100 μL	15 min	CE
NEW IF5052	PG I/PG II	Atrophic gastritis, stomach cancer	PG I < 70.0 ng/mL PG I/PG II < 3.0 ng/mL	S/P	PG I: 1.0-200.0 ng/mL PG II: 1.0-100.0 ng/mL	100 μL	15 min	

Coming Soon: Folate...

GP Getein Biotech, Inc.

Add.: No.9 Bofu Road, Luhe District, Nanjing, 211505, China
Tel.: +86-25-68568508/68568594
Fax: +86-25-68568500
E-mail: sales@getein.com.cn; overseas@getein.com.cn
Web.: www.getein.com



FSC CE NMPA NGSP IFCC IVD

