



ASO Fast Test Kit (Immunofluorescence Assay)

Instructions for Use

INTENDED USE

ASO Fast Test Kit (Immunofluorescence Assay) is intended for *in vitro* quantitative determination of anti streptolysin "O" antibody (ASO) in serum, plasma or whole blood samples. ASO is a very valuable marker for the diagnosis of group A streptococcal infection, its titer can reflect the severity of infection. Some diseases will lead to a significant increase in ASO titer, such as acute rheumatic fever. For professional and laboratory use only.

SUMMARY

Streptolysin "O", a protein with hemolytic activity, is one of the important metabolites of group A streptococcus. It can dissolve the red blood cells of human and some animals. Streptolysin "O" has strong antigenicity. When human is infected with group A hemolytic streptococcus, B lymphocytes will secrete corresponding antibodies under the stimulation of streptolysin "O", that is, anti streptolysin "O"(ASO). This antibody can neutralize streptolysin "O" and disable its hemolytic ability.

ASO began to rise one week after group A Streptococcus infection, peaked in 4-5 weeks and lasted for several months. As the infection subsides, ASO decreased and returned to normal value within 6 months. The disease condition can be judged by repeated measurements over time. The increase of ASO over time indicates the early stage of infection, decrease indicates the subsiding stage of infection. The lack of decline in ASO titer suggested the possibility of recurrent or chronic infection.

PRINCIPLE

ASO Fast Test Kit (Immunofluorescence Assay) adopts a double-antigen sandwich method to quantitatively detect the concentration of ASO in human serum, plasma and whole blood samples.

After the sample has been applied to the test card, the

fluorescently labelled ASO antigen binds with ASO in sample and forms a marked antigen-antibody complex. The complex moves to the detection area by capillary action, then it is captured by ASO antigen coated on the detection area of nitrocellulose membrane, forming a double-antigen complex. The fluorescence intensity of the test line increases in proportion to the amount of ASO in sample. Fluorescent signals intensity can be analyzed by applicable device thus the ASO in sample be detected quantitatively.

APPLICABLE DEVICE

Getein 1100 Immunofluorescence Quantitative Analyzer
Getein 1160 Immunofluorescence Quantitative Analyzer
Getein 1180 Immunofluorescence Quantitative Analyzer
Getein 1600 Immunofluorescence Quantitative Analyzer
Getein 1200 Immunofluorescence Quantitative Analyzer

CONTENTS

Materials provided	Getein 1100/ Getein 1160/ Getein 1180		Getein 1200/Getein 1600	
	10 T/kit	25 T/kit	2*24 T/kit	2*48 T/kit
ASO test card*	10 pcs	25 pcs	24 test cards in 1 cartridge, and 2 cartridges in 1 box	48 test cards in 1 cartridge, and 2 cartridges in 1 box
Disposable pipet	10 pcs	25 pcs	/	/
Sample diluent**	10 tubes	25 tubes	1 box	1 box
Instructions for use	1 pc	1 pc	1 pc	1 pc
SD card	1 pc	1 pc	1 pc in each cartridge	1 pc in each cartridge

*ASO test card

A test card consists of: Fluorescently labelled ASO antigen, ASO antigen.

** Sample diluent

(1)Sample diluent for Getein 1100/Getein 1160/Getein 1180 in each tube mainly consists of: phosphate buffer (20 mmol/L), Na₃ (<0.1%).

(2)Sample diluent for Getein 1200/Getein 1600 is an independent packing box mainly consists of:

-Phosphate buffer (20 mmol/L), Na₃ (<0.1%) (25 mL/bottle for Getein 1200, 30 mL/bottle for Getein 1600),

-Box with pipette tips (96 tips/box),

-Mixing plate (1 piece/box).

Note:

- The standard curve data can be written to RFID card in the kit. According to the function of RFID card, we define it as "Standard Curve Data Card", short for "SD Card".
- Do not mix or interchange different batches of kits.

STORAGE AND STABILITY

Realtime stability:

Store the kit at 4~30°C with a valid period of 24 months. The test kits are stable until the expiry date printed on the labels.

In-use stability:

-For the test card of Getein 1100/Getein 1160/Getein 1180: Use the test card within 1 hour once the foil pouch is opened.

-For test card of Getein 1200/Getein 1600: if the cartridge is opened, it could be stable within 24 hours once exposed to air. If the test cards can't be used up at a time, please put the cartridge back to the foil pouch and reseal along the entire edge of zip-seal. The remaining test cards should be used up within 7 days.

PRECAUTIONS

- For *in vitro* diagnostic use only.
- For professional and laboratory use only, not for near-patient test and self-testing.
- Do not use the test card if the foil pouch or the cartridge is damaged.
- Do not open pouches until performing the test.
- Handle all specimens as potentially infectious. Proper handling and disposal methods should be followed in accordance with local regulations.
- Carefully read and follow instructions for use to ensure proper test performance.

SPECIMEN COLLECTION AND PREPARATION

- Serum, plasma or whole blood samples can be used for the test. Other body fluids and samples may not give accurate results. Samples should be free of hemolysis.
- Venous blood should be collected under aseptic conditions; serum or plasma is preferred for testing.
- Heparin, sodium citrate or EDTA can be used as the anticoagulant for plasma and whole blood samples.
- It is recommended to test the sample within 4 hours after collection. Stable in serum and plasma for 7 days at 2~8°C and 3 months at -20°C. Stable in whole blood for 3 days when stored at 2~8°C.
- Refrigerated or frozen sample should be reached to room temperature before testing. Frozen samples must be completely thawed, rewarmed and evenly mixed. Serum and

plasma samples can be freeze and thawed as much as most.

- Sample volume (for Getein 1100/Getein 1160/Getein 1180): 10 µL

TEST PROCEDURE

- User must carefully read and operate in strict accordance with the instructions for use before testing, otherwise reliable results cannot be guaranteed.

- Test kit and sample should be brought to room temperature before testing.

For Getein 1100:

- Confirm SD card lot No. in accordance with test kit lot No. It is required to perform "SD card" calibration when using a new batch of kits.

- Select the corresponding "Sample" on the analyzer according to the sample type (see the user manual of analyzer for details).

- Remove the test card from the sealed pouch before use. Horizontally place the test card.

- Deliver 10 µL of sample into one tube of sample diluent using disposable pipet or pipette, mix gently and thoroughly. Then drop 100 µL of sample mixture into the sample well on the test card.

- Reaction time: 10 minutes.** After reaction time is elapsed, insert the test card into Getein 1100 and press "ENT" button (click on "Start" icon for Android Getein 1100). The result will be shown on the screen and printed automatically.

For Getein 1160/Getein 1180:

- Confirm SD card lot No. in accordance with test kit lot No. It is required to perform "SD card" calibration when using a new batch of kits.

- Select the corresponding "Sample" on the analyzer according to the sample type (see the user manual of analyzer for details).

- Remove the test card from the sealed pouch before use. Horizontally place the test card.

- Deliver 10 µL of sample into one tube of sample diluent using disposable pipet or pipette, mix gently and thoroughly. Then drop 100 µL of sample mixture into the sample well on the test card.

- Insert the test card into Getein1160/Getein1180 **immediately** after sample loading. The analyzer will count down the reaction time (10 minutes) and automatically test the card after reaction time is elapsed. The result will be shown on the screen and printed automatically.

For Getein 1200/Getein 1600:

- Each cartridge for Getein 1200/Getein 1600 contains a

specific RFID card (SD card) which can calibrate automatically.

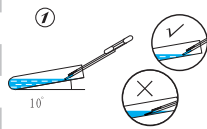
2. Place the sample diluent at the correct position in Getein 1200/Getein 1600.

3. Place samples in the designed area of the sample holder, insert the holder, set parameters (more operational details refer to the user manual of analyzer) and run the instrument, Getein 1200/Getein 1600 will do the testing and print the result automatically.

Note:

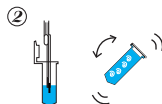
1. It is required to perform "SD card" calibration when using a new batch of kits for Getein 1100/Getein 1160/Getein 1180.
2. The directions for using disposable pipet are as follows:

Directions to use disposable pipet

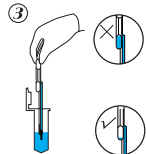


Insert the disposable pipet into the sample tube, gently touch the liquid surface with the capillary tip, and draw the sample.

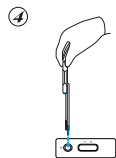
Note: Do not immerse the exhaust pipe below the liquid level.



Insert the disposable pipet (including the exhaust tube) into the dilution liquid, gently squeeze the suction bulb to perform 2-3 aspiration washing cycles, then mix the dilution manually.



Insert the disposable pipet (including the exhaust tube) into the dilution liquid, firmly squeeze the suction bulb to aspirate the mixed sample.



Squeeze the suction bulb and drop the mixed sample vertically into the sample well on the test card.

RESULTS

Getein 1100/Getein 1160/Getein 1180/Getein 1200/Getein 1600 can scan the test card automatically and display the result on the screen. For additional information, please refer to the user manual of Getein 1100/Getein 1160/Getein 1180/Getein 1200/Getein 1600.

Others:

Samples whose concentration exceeds the upper limit should be diluted no more than 4 times.

LIMITATIONS

1. As with all diagnostic tests, a definitive clinical diagnosis should not be made based on the result of a single test. The test results should be interpreted considering all other test results and clinical information such as clinical signs and symptoms.
2. Some substances in blood as listed below may interfere with the test and cause erroneous results. The maximum allowance concentration of each is as follows:

Interferent	Concentration (Max)
Triglyceride	10 mg/L
Bilirubin	0.1 mg/L

EXPECTED VALUE

The expected normal value for ASO is determined by testing samples from 282 apparently healthy individuals. The upper 80th percentile value is 214.0 IU/mL. The upper 95th percentile value is 408.0 IU/mL. It is recommended that each laboratory determine the applicability of the reference value through experiments and establish its own reference ranges if necessary.

PERFORMANCE CHARACTERISTICS

Measuring Range	60.0-1370.0 IU/mL
Limit of Detection	≤60.0 IU/mL
Within-Run Precision	≤10%
Between-Lot Precision	≤15%

REFERENCES

1. Hahn RG, Knox LM, Forman TA. Evaluation of poststreptococcal illness[J]. American family physician, 2005,71(10): 1949-54.
2. Sahin MS, Yalcin MU, Kocycigit D. Prevalence of rheumatic heart disease in patients with recurrent tonsillitis and elevated anti-streptolysin O titers [J]. International Journal of Pediatric Otorhinolaryngology,2016,89:133-5.

3. Chang ST, Ku CH, Cherg SC. Evidence-based correlation between anti-streptolysin O serum titer and sacroiliac joint disorder[J]. The Journal of rheumatology,2007, 34(8): 1746-52.

4. Ota H, Sato A, Matsumoto H, et. al. Immunological analysis of pseudo-positive reaction in healthy adults at anti-streptolysin O measurement by latex agglutination method[J]. Rinsho byori. The Japanese journal of clinical pathology,2005,53(4): 279-83.

DESCRIPTION OF SYMBOLS USED

The following graphical symbols used in or found on ASO Fast Test Kit (Immunofluorescence Assay) are the most common ones appearing on medical devices and their packaging. They are explained in more detail in the European Standard EN ISO 15223-1:2021.

Key to symbols used			
	Manufacturer		Use-by date
	Do not re-use		Date of manufacture
	Consult instructions for use or consult electronic instructions for use		Batch code
	Temperature limit		In vitro diagnostic medical device
	Contains sufficient for <n> tests		Authorized representative in the European Community/European Union
	CE mark		Do not use if package is damaged and consult instructions for use
	Catalogue number		Caution

Thank you for using ASO Fast Test Kit (Immunofluorescence Assay). Please read the instructions for use carefully before operating to ensure proper use.

Version: WIF83-S-06

CMC Medical Devices & Drugs S.L.

Addr.: C/ Horacio Lengo Nº 18, CP 29006, Málaga, Spain

Tel: +34951214054

Catalogue number	Applicable analyzer	Package specification
IF1076-10T	Getein 1100	10 T/kit
IF1076	Getein 1100	25 T/kit
IF5076-10T	Getein 1160	10 T/kit
IF5076	Getein 1160	25 T/kit
IF3076-10T	Getein 1180	10 T/kit
IF3076	Getein 1180	25 T/kit
IF4076	Getein 1200	2*24 T/kit
IF4076-96T	Getein 1200	2*48 T/kit
IF2076	Getein 1600	2*24 T/kit
IF2076-96T	Getein 1600	2*48 T/kit

Getein Biotech, Inc.
 Add.: No.9 Bofu Road, Luhe District, Nanjing, 211505, China
 Tel: +86-25-68568508
 Fax: +86-25-68568500
 E-mail: tech@getein.com.cn
 overseas@getein.com.cn
 Website: www.getein.com